

The liniLED® COB R White is a revolutionary lighting solution. With a wide 180° beam angle, this product ensures expansive and uniform illumination, making it ideal for a variety of applications.

Experience superior heat dissipation, allowing for efficient and reliable performance even in demanding conditions. The high package density of the liniLED® COB R White ensures powerful and concentrated lighting output, delivering impactful results for diverse lighting projects.





Benefit from the product's exceptional flexibility, providing ease of installation and adaptability to various design requirements. Whether you're illuminating architectural features, creating ambient lighting, or enhancing visual aesthetics, the liniLED® COB R White is the perfect choice.

For the latest version of this datasheet, visit our website: <https://www.triolight.com/en/led-products/led-strips>

### USPs

- IP67 flexible silicon extrusion for easy mounting
- High Efficiency (up to 150 lum/W)
- CRI 90
- L90/B10>47000hrs @ 55°C.; lumen maintenance 89.95%
- 5 year warranty

### Available colours

Colour	Description
 Extra Warm White 2700K	liniLED® COB R 1000 2700K CRI90
 Warm White 3000K	liniLED® COB R 1000 3000K CRI90
 Natural White 4000K	liniLED® COB R 1000 4000K CRI90
 Cold White 6500K	liniLED® COB R 1000 6500K CRI90

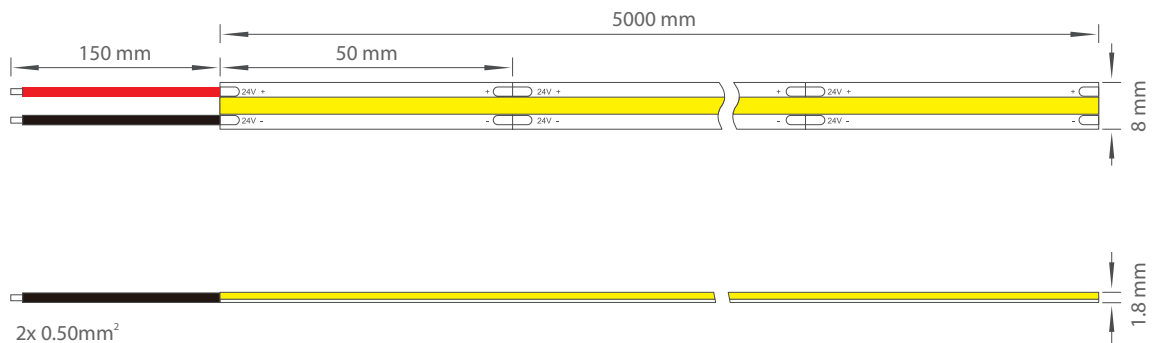


## Technical specifications

	2700K	3000K	4000K	6500K
Product code	RC10-927	RC10-930	RC10-940	RC10-965
Power (24V DC)	10 W/m	10 W/m	10 W/m	10 W/m
CCT	2700K	3000K	4000K	6500K
CRI	90	90	90	90
Luminous flux	995 lm/m	1006 lm/m	1070 lm/m	1059 lm/m
Luminous efficiency	100 lm/W	100 lm/W	107 lm/W	106 lm/W
Spool length	5 m			
Section length	50 mm			
LED type	COB			
Number of LEDs	480 pcs			
Max. connection length	5 m			
Min. operating voltage	23V DC			
Max. operating voltage	25V DC			
Width	8mm			
Height	1.8 mm			
Dimmable	PWM, 0-10V, DALI and DMX dimming			
MacAdam Steps	3 Steps			
Type of protection	IP22			
Storage temperature	-20°C ... +60°C			
Operating temperature	-20°C ... +70°C			

Typical measured values are given, which due to tolerances in components and production process can vary up to 10%.

## Product drawings



## Power consumption

To power the liniLED® LED strips and lighting fixtures, a power supply from the liniLED® Power assortment can be selected. Selection of the correct power supply must be done by taking the total requested power and the environment into account.

The total power consumption can be calculated by summing the requested power of all connected products. To calculate the power consumption of a single length of LED strip, use the equation below. The typical equation is valid if the product is supplied by a 24 V DC constant voltage power supply. If the output voltage of a power supply is increased, the power consumption will increase with the same ratio and needs to be corrected by using the optional part of the equation found between brackets.

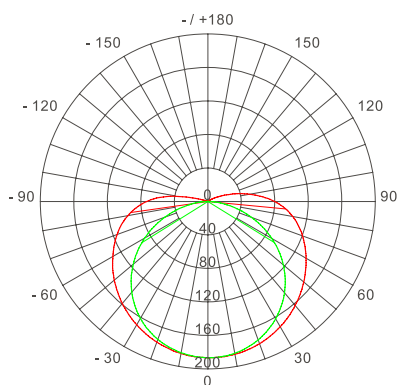
$$P_{STRIP} = P_{PRODUCT} \times X_{LENGTH} \times 110\% \left[ \times \frac{U_{SUPPLY}}{24} \right]$$

- $P_{STRIP}$**  Calculated power consumption of one LED strip in Watt
- $P_{PRODUCT}$**  Typical power consumption in Watt per metre of the selected LED strip  
This value can be found under 'Product characteristics' on page 2
- $X_{LENGTH}$**  Length of the connected LED strip in metres
- 110%** Safety margin to buffer differences over all production batches
  
- Optional:
- $U_{SUPPLY}$**  Set supply voltage of the power supply in Volt
- 24** Nominal supply voltage of liniLED® in Volt

## Photometric information

In the process of lighting design and calculations, the luminous flux and beam angle alone are not enough information to create a representative and realistic calculation or render. There is a set of photometric files for each LED strip type, available in two different file formats:

- Eulumdat (.ldt)
- IES LM-63-1995 (.ies)



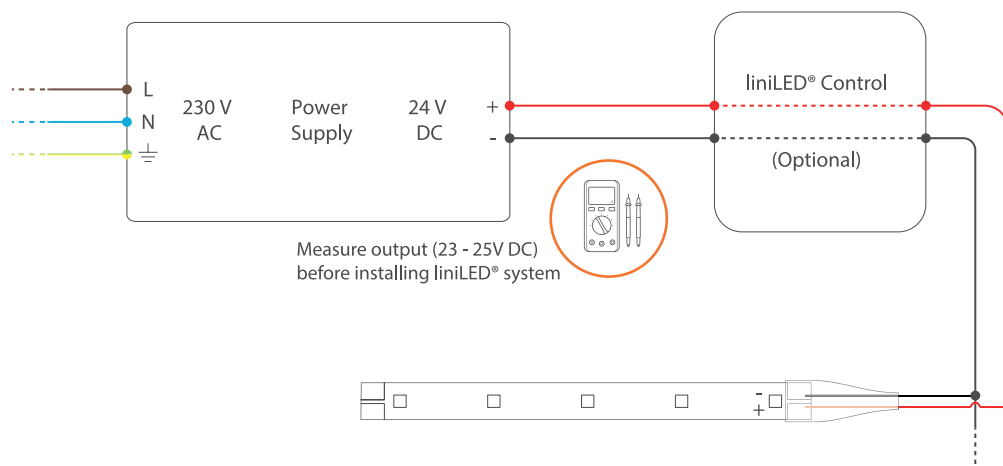
Unit: cd  
 - C 0 /180,166.3°  
 - C 90/270,116.3°  
 AVERAGE BEAM ANGLE(50%): 141.3°

Height	Eavg, Emax	Beam Angle: 116.25°	Diameter
0.3m	571.2,2121lx		96.50cm
0.6m	142.8,530.4lx		192.99cm
0.9m	63.46,235.7lx		289.49cm
1.2m	35.70,132.6lx		385.99cm
1.5m	22.85,84.86lx		482.48cm
1.8m	15.87,58.93lx		578.98cm
2.1m	11.66,43.30lx		675.48cm
2.4m	8.925,33.15lx		771.97cm
2.7m	7.052,26.19lx		868.47cm
3.0m	5.712,21.21lx		964.97cm

Flux Out: 447.3lm      3000K

Note: the above data is based on RC10-940 at 4000K. For other data, please consult sales rep.

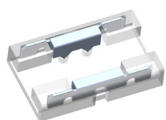
## Power and connection diagram



## Accessories

### RC10-ConBB

liniLED® COB Board to Board connector



### RC10-Con

liniLED® COB Connector Mono



### RC10-ConExt

liniLED® COB Extension Cord



## Disclaimer

---

The published information is checked to be as accurate as possible, however Triolight B.V. or any reseller of liniLED® cannot be held liable for any damages resulting from misprints, errors, modifications or outdated information. No legal rights can be derived from this document. Triolight B.V. reserves the right to modify the information without informing the customers. Please check for the latest version on [www.triolight.com](http://www.triolight.com). This product should not be used in applications, devices or systems where incorrect operation of the product may result in personal injury (includes emergency lighting) without written permission from the board of Triolight B.V. If nevertheless used in such applications, devices or systems, Triolight B.V. cannot be held liable for any resulting injury. liniLED® is a registered trademark of Triolight B.V.

## Symbols

---



Manufacturer's declaration that the product meets the applicable EC directives.



Operating voltage of 24 V DC.



Electro Static Discharge (ESD) sensitive device, apply standard ESD precautions when handling the product.



Restriction of Hazardous Substances (RoHS): product complies with the RoHS directive and each homogeneous material does not exceed the limits for the materials mentioned under the RoHS directive (Pb, Hg, Cd, Cr6+, PBB and PBDE).



Not protected against ingress of solid foreign objects. Not-protected against ingress of water.



System guarantee of 5 years when the complete system consist of liniLED® products with the 5 years system warranty logo. Terms & conditions apply.